

Open solutions for deforestation-free supply chains tracking



TEI zero-deforestation hub : SAFE project



<https://zerodeforestationhub.eu/projects/safe>

How to assess deforestation risk to support compliance requirements ?

Boundaries

- Field data
- Digitized manually
- Segmentation

Unique Geo-IDs

- GDSP compliant
- Anonymous
- Attribute-less

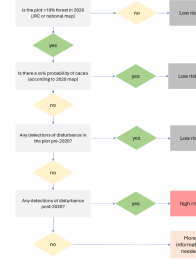
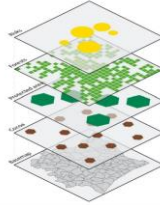
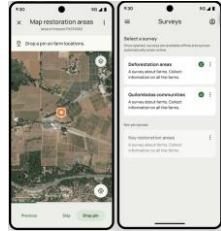
Public geodata

- Land cover
- LC Change
- Biophysical
- Land use

Public models

- AI models
- Decision trees

Digital Public Infrastructure prototype



GEOID	TMF	GFC	GAEZ	PA	Alert	LCLU
'c288d6c94efa'	10	30	1	yes	1000	Trees
'1a41a309ae2'	9	30	1	no	200	Trees
'1a4472dc407'	10	10	2	no	200	Agriculture
'8e2acce7dd'	1	70	4	no	100	Bare

Boundaries

- Field data
- Digitized manually
- Segmentation



Unique Geo-IDs

- GDSP compliant
- Anonymous
- Attribute-less



Public geodata

- Land cover
- LC Change
- Biophysical
- Land use



Public models

- AI models
- Decision trees



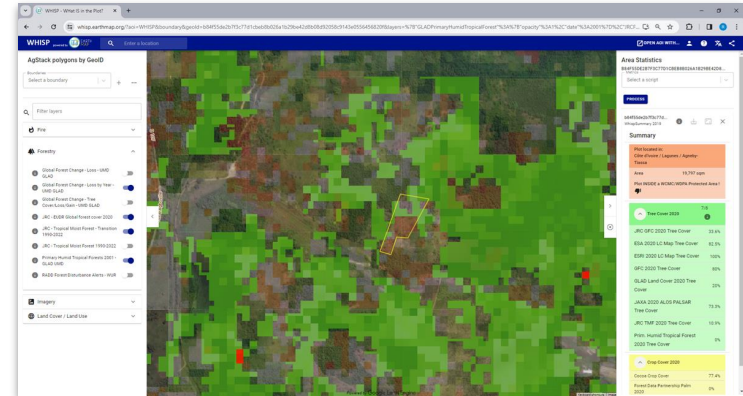
openforis

Compliance support

- Standardized data
- Risk assessment at the plot level

FOREST DATA
Partnership

- www.github.com/forestdatapartnership/whisp



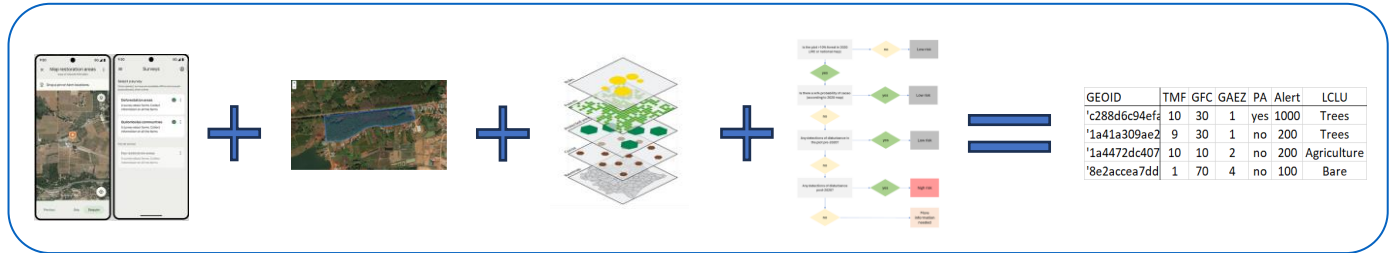


Arnell, Andrew
d'Annunzio, Rémi
Fox, Julian
Fontanarosa, Roberto
Merle, Caroline
Neeff, Till
O'Brien, Victoria
Sanchez-Paus Díaz, Alfonso
Shapiro, Aurélie
Vega, Jonathan
Valbuena Perez, Pilar

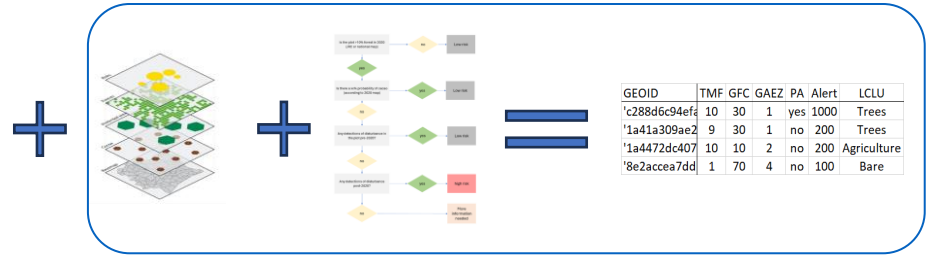
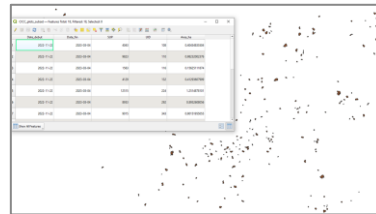
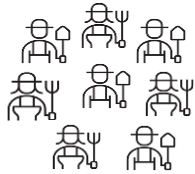


Who is *Whisp* for ? Modularity at scale

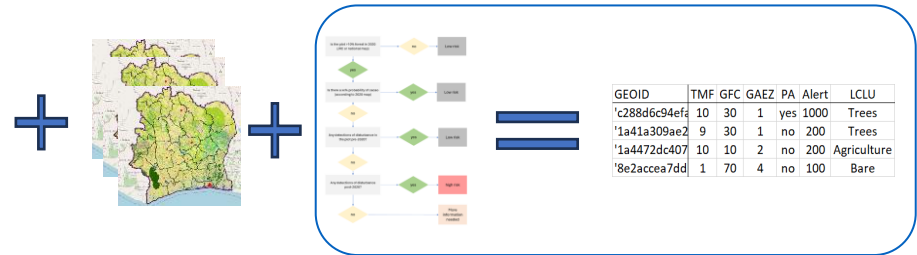
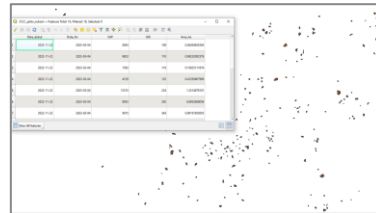
Farmer



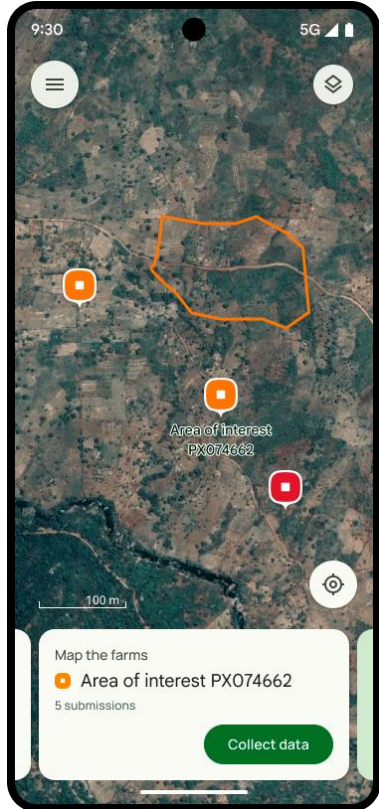
Cooperative



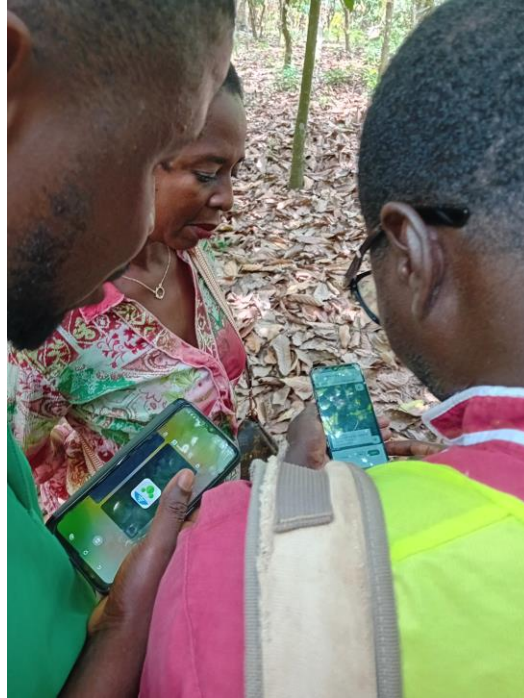
Government /
3rd Party



Whisp in Open Foris Ground



Access at <https://ground.openforis.org>



Whisp on GitHub for operational downstream implementation



The screenshot displays the SEPAL web application interface, which is a Jupyter Lab environment. The interface is divided into several sections:

- File Explorer (Left):** Shows a file tree with folders like 'dataset_pro...', 'datasets', 'misc', 'modules', 'parameters', 'config_ceo...', 'dpl_prototy...', 'LICENSE', 'output_stat...', 'polm_v0_re...', and 'polm_v0ip...'. The 'polm_v0ip...' folder is selected.
- Code Editor (Center):** Contains three sections:
 - 7. Display table:** A code cell with the following code:

```
[104]: df[df['ceo_cols']].to_csv(path_or_buf=out_file_wide, header=True)
df[df['ceo_cols']]
```

 Below the code is a table with the following data:

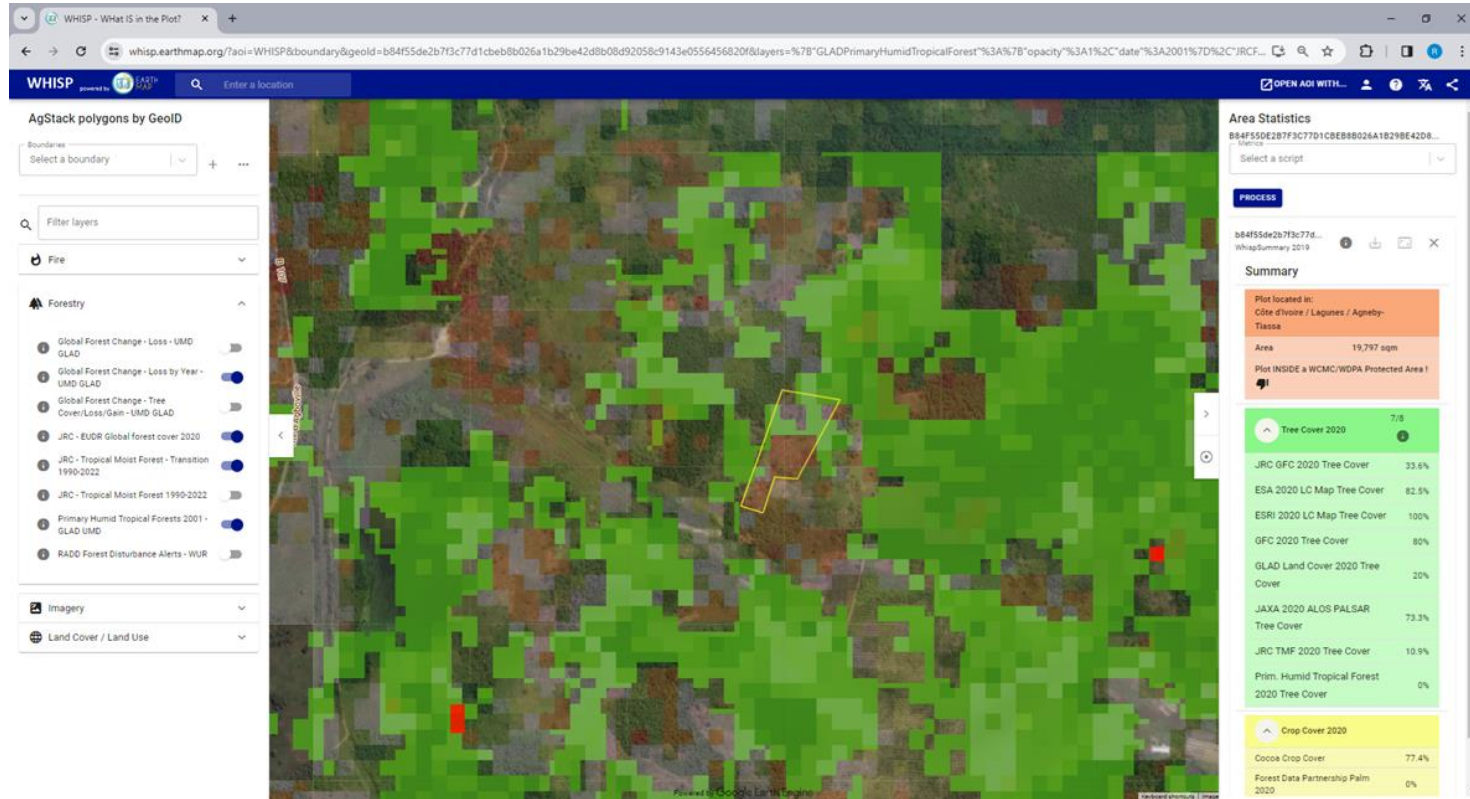
	Geo id	Area ha	Country	EUFO 2020	GLAD Primary	ur
1	41430f5cd45e3cb06cc8d0222f11e006eee0184aaf0359...	6.2	Central African Republic	96	0	
2	6e5cf17a73b68189db92920865ebe9899c183df75c1f20...	38.7	Cameroon	63	4	
3	2a2e09f0d03e4de4da2f7eebc4ff3f20a6c1cd4fd8c...	4.4	Cameroon	0	0	
4	2a1b18a2d21ed4a5efda35b5842d095f06b0ee43ab758a...	1.7	Cameroon	0	0	
 - 8. Generate CEO URL:** A code cell with the following code:

```
[106]: print(ceo_url)
https://app.collect.earth/collection?projectId=40142
```
 - 9. Optional: exporting images to an image collection:** A code cell with the following code:

```
#if asset exists and parameters/config_runtime_parameters.py says to do so, the below script will
add to it if not already there execute("misc/export_to_image_collection.py")
```
- Map (Right):** A map of Central Africa showing a green area representing a forest. The map includes a scale bar (200 m, 500 ft) and a legend on the right side with various layers and settings.

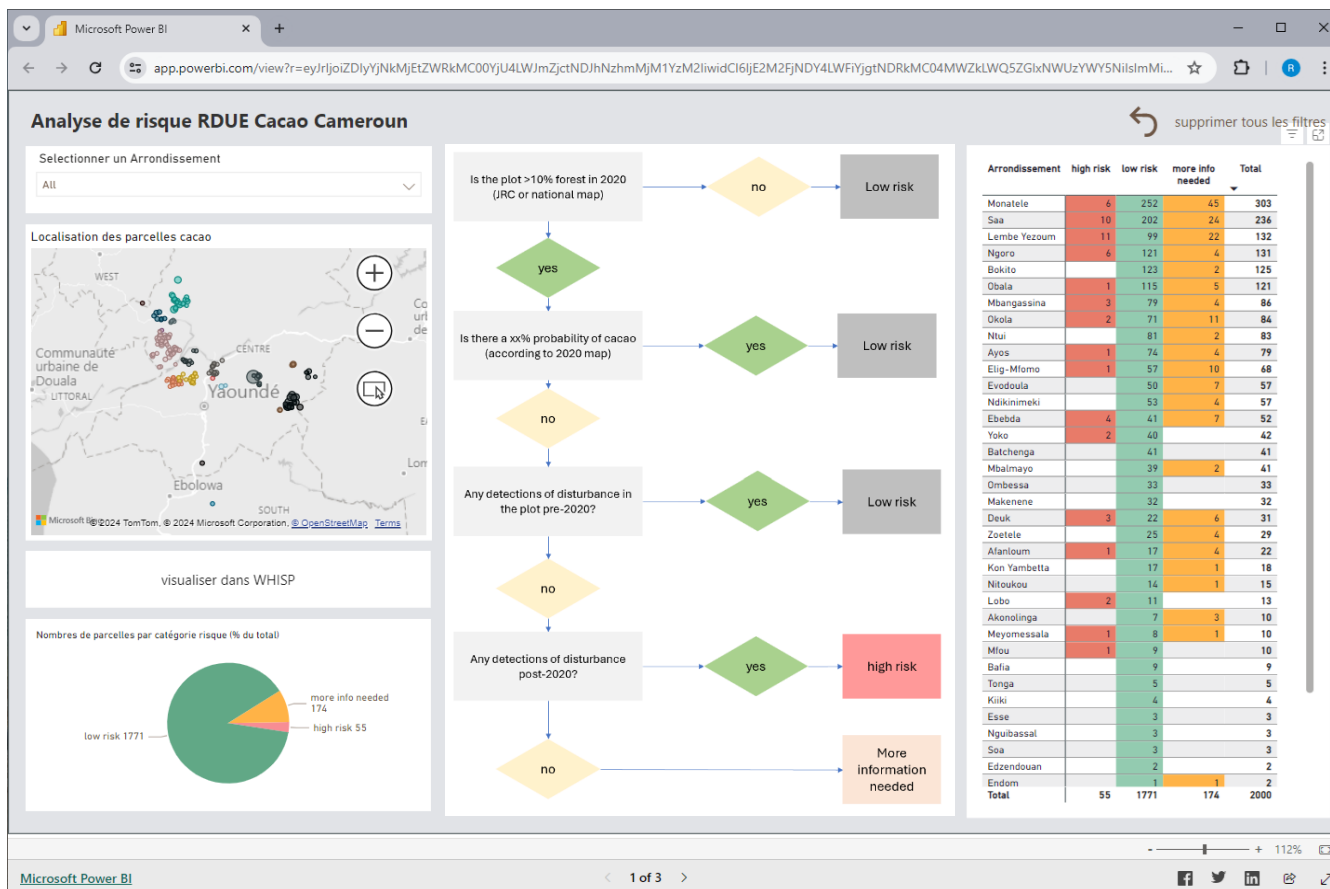
<https://github.com/forestdatapartnership/whisp>

What is in ***your*** plot ? DEMO time with *Whisp* in EarthMap



<https://whisp.earthmap.org/>

Risk analysis: example in Cameroon, agroforestry cocoa



Thank you to CICC
for providing this
data



Dashboard in PowerBI

What is in *Whisp* ? We don't (just) **value** your feedback: we **need** it

FOREST DATA Partnership

Whisp Layers Feedback Survey

rdannunzio.pro@gmail.com [Switch accounts](#)

Not shared

Dataset relevance

Please indicate if you know about those different layers and how you value their relevance for the WHISP process

Tree cover and Forest layers

	I don't know what that is	Not relevant	Somewhat relevant	Essential
JRC Global Forest Cover 2020	<input type="radio"/>	<input type="radio"/>	<input type="radio"/>	<input type="radio"/>
JRC Tropical Moist Forest (TMF) 1990 - 2022	<input type="radio"/>	<input type="radio"/>	<input type="radio"/>	<input type="radio"/>
GLAD Tree Cover 2000 (GFC)	<input type="radio"/>	<input type="radio"/>	<input type="radio"/>	<input type="radio"/>

Please take the survey and
share



https://bit.ly/forest-data-partnership_whispsurvey