

LUNCHEBREAK



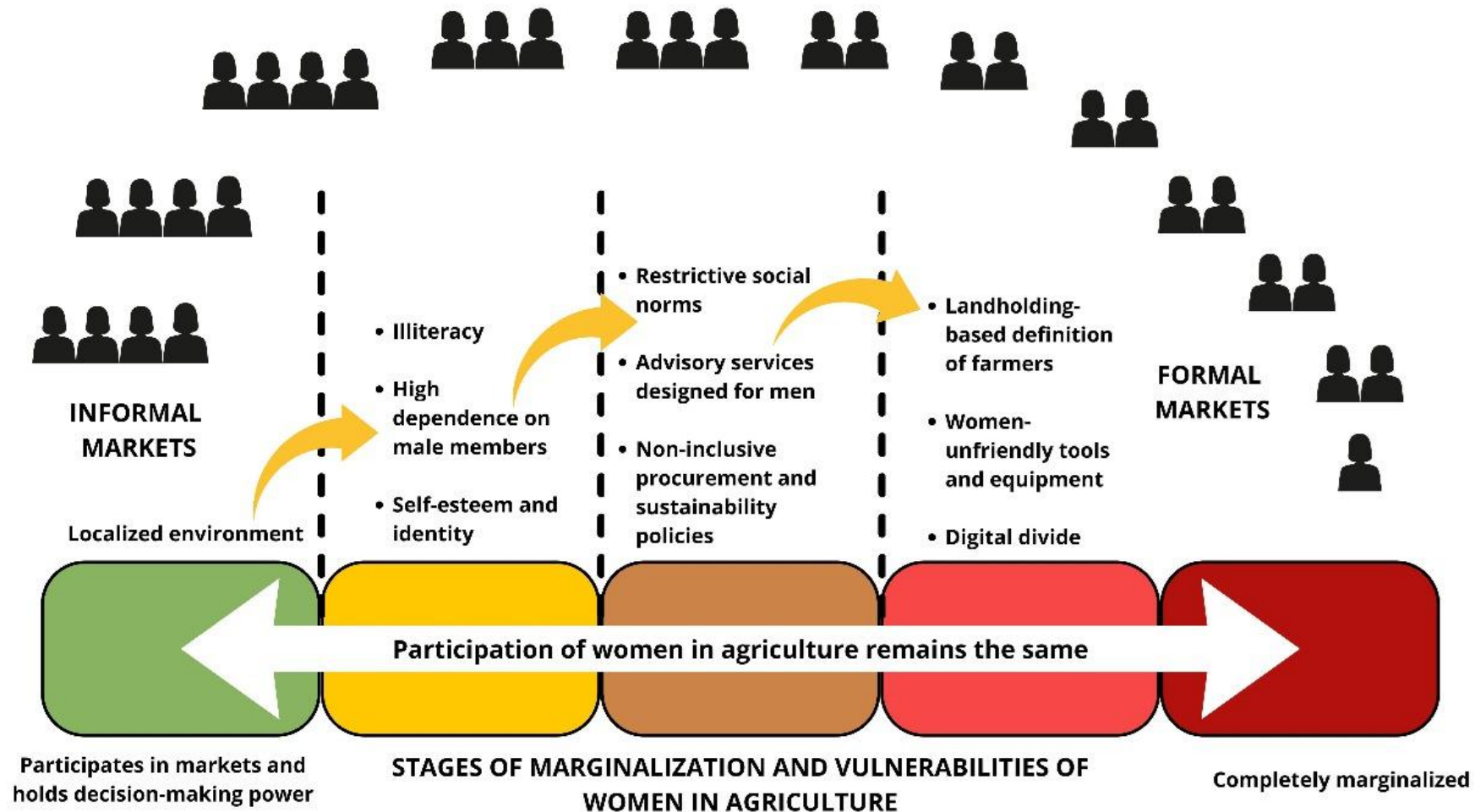
Advancing Gender Equity in Agricultural Supply Chains

07 November 2025, 12 – 1 pm



Palm Oil & Women's Equity through Resources, Rights, and Representations (PoweRRR) Indonesia

TRAJECTORY OF PARTICIPATION OF WOMEN IN SUPPLY CHAINS

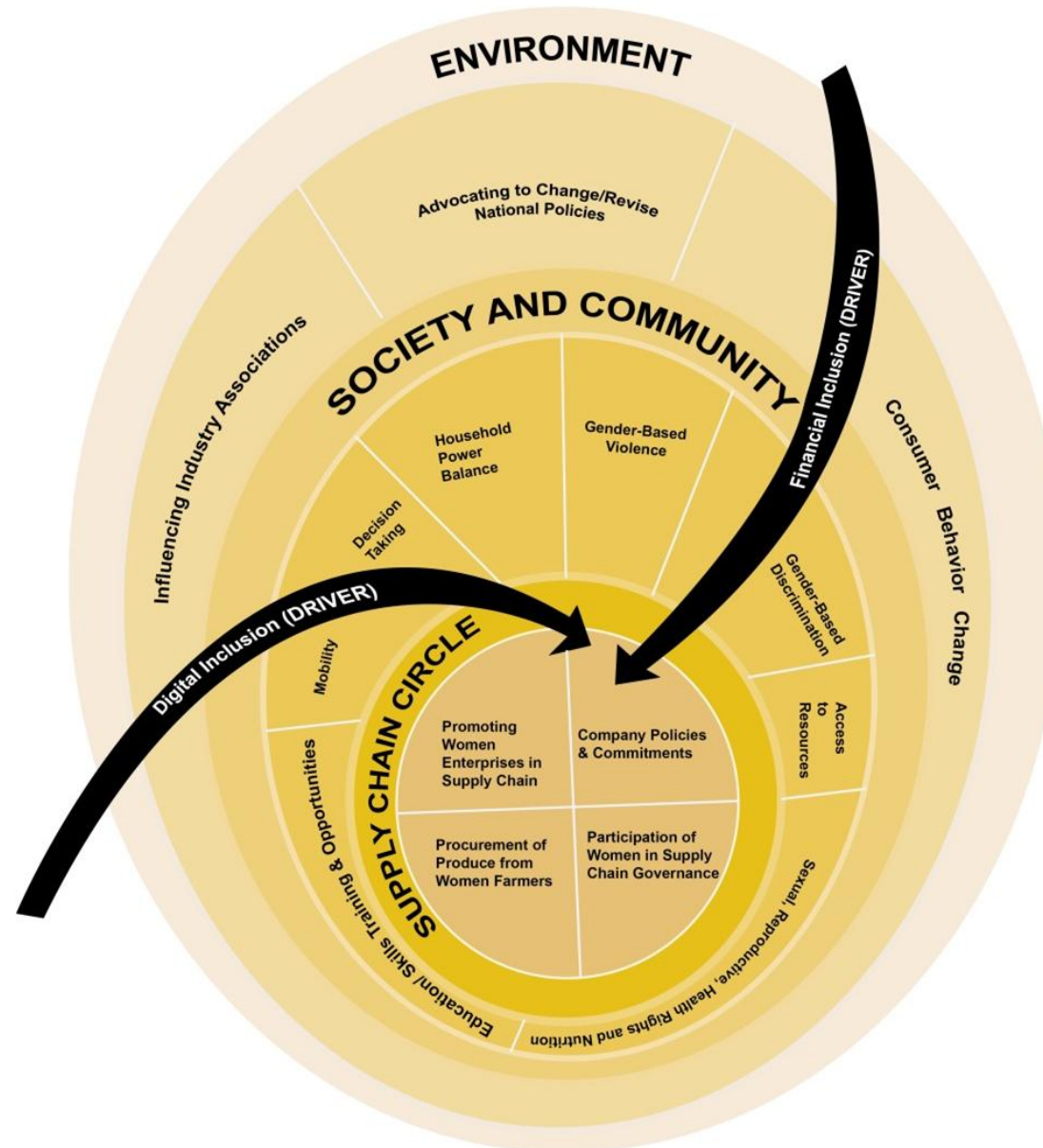


PARTICIPATION OF WOMEN IN FORMAL SUPPLY CHAINS CAN ...



HOW TO ENGAGE?

Feminisation of Supply Chains



A CASE FOR DEMONSTRATION: PowerRRR

Cooperatives
(A dipstick study of the
project cooperative)

W
O
M
E
N

F
A
R
M
E
R
S

Activities

Training on good agricultural practices

Training on gender basics

Training on financial inclusion

Training on enterprise development

Confidence building

Support women group to work on IGA apart from palm plantation

Outcomes

On a scale of 1 to 5, what has changed?

- Improved quantity: 4 from 2.5
- Enhanced quality: 3.5 from 2.5
- Consistent supplies: 4 from 3

Are there any tangible examples where women's involvement contributes to better agricultural output?

- In terms of harvesting, women are very good
- Better handling of plantation finances
- Better upkeep and care of plantations
- Women's efforts in composting and processing waste
- Women's use of organic fertilizers, including crop residue and household waste

With the presence of women,

- plantation activities are scheduled better
- financial and time management are well-managed

IT IS NOT A ONE-WAY STREET

From Farmer to Company



SUPPLY CONSISTENCY

Ensuring a reliable and steady flow of goods



QUALITY PRODUCE

Delivering high-standard products to customers



QUANTITY PRODUCTION

Maximizing the volume of goods produced



WORKING CONDITIONS

Providing safe and fair environments for employees



REGULATORY COMPLIANCE

Adhering to all legal and ethical standards

From Company to Farmer



DIRECT TRANSFER OF MONEY TO FARMERS

Ensuring farmers receive payment promptly for their produce



CAPACITY ENHANCEMENT

Improving farmers' skills and resources for better soil and production



ENSURED BUY-BACKS

Guaranteeing that farmers' produce shall be purchased at a fair price



CONTINUED MARKET ACCESS

Providing farmers with ongoing opportunities to sell their products



BETTER LIVING CONDITIONS

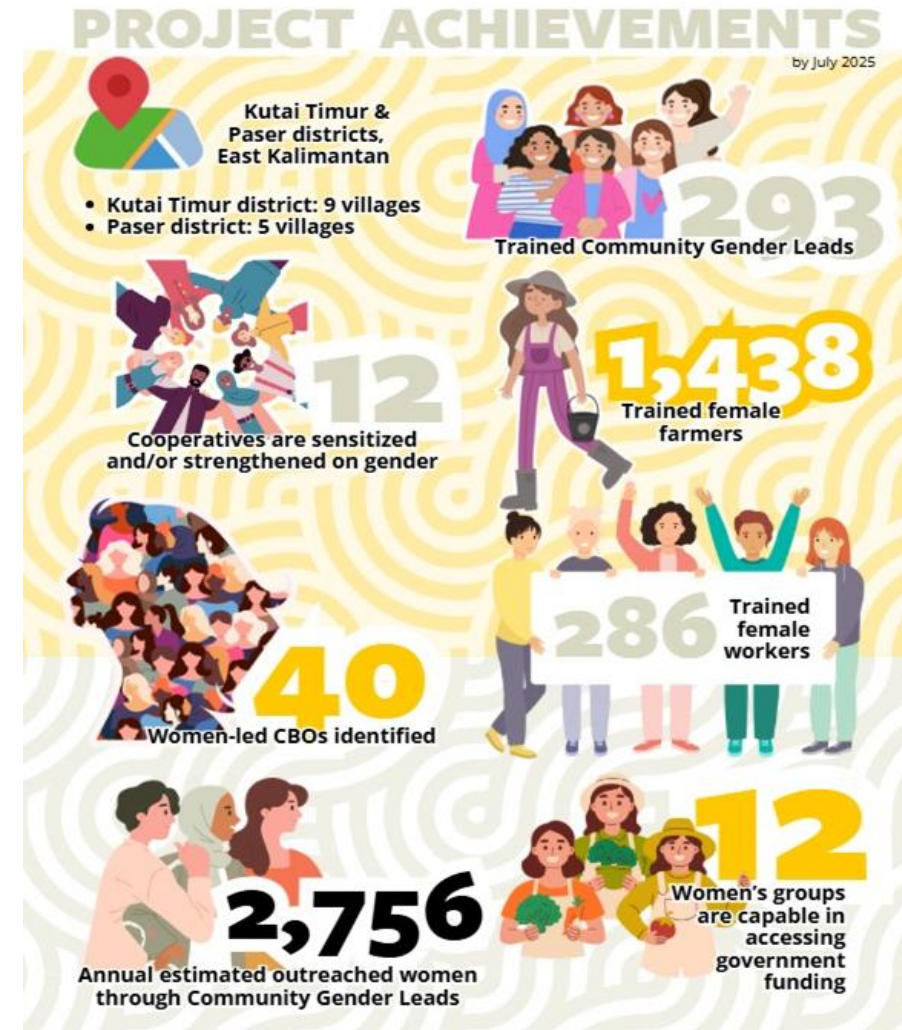
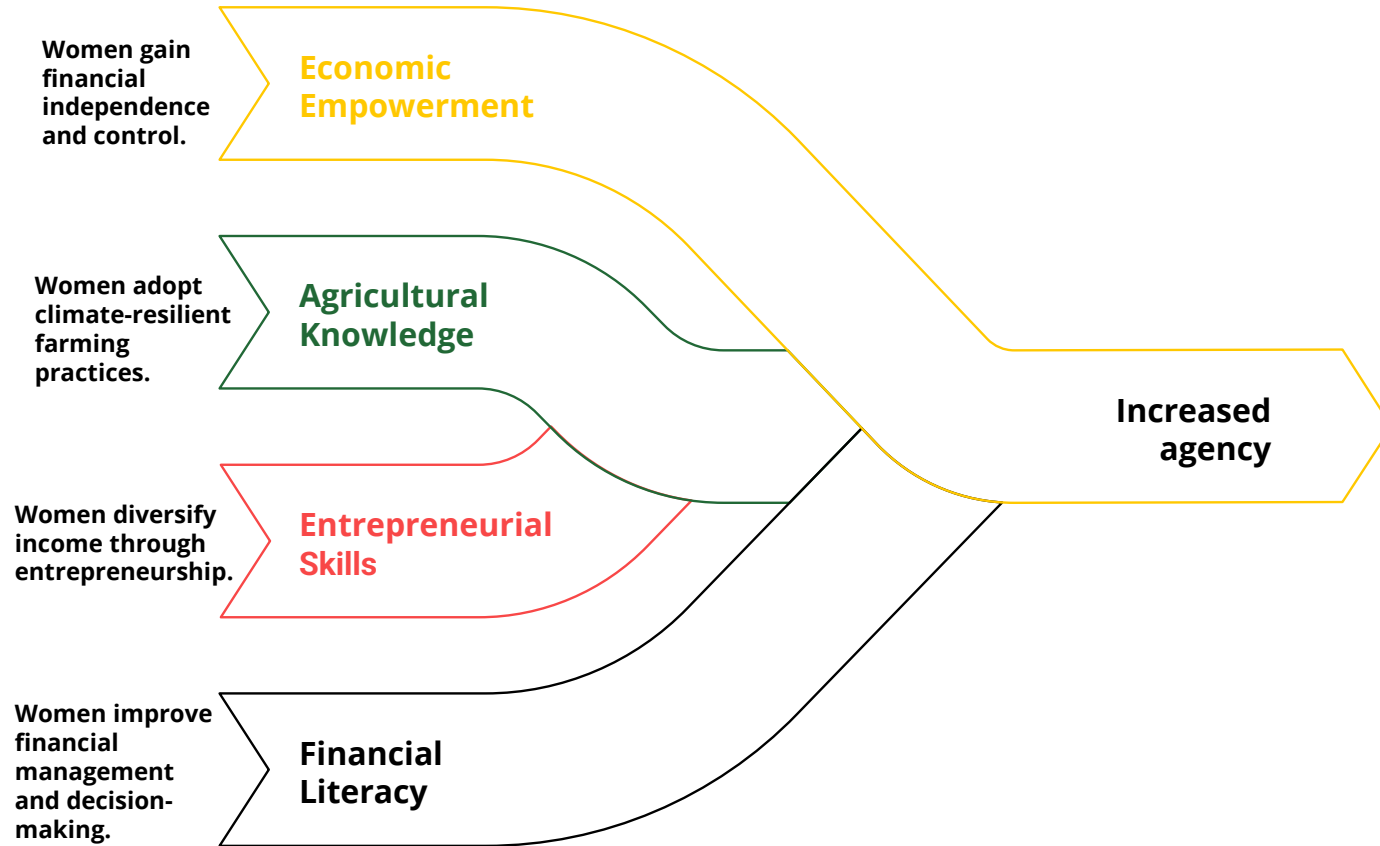
Enhance the overall quality of life for farmers and their families



While there is a business case for both women and companies, there is a large social angle to it.

PATHWAYS TO RESILIENCE

Gender Basics Training



Understanding of gender-based challenges

- Psychologically empowered women
- More active in the community and other work
- Able to see the structural issues and resolve them

Economically empowered women

- Have more income
- Have more control over income

Women have a better understanding and knowledge of good agricultural practices

- More confident in making decisions about farm activities
- Better manage the activities they are more involved in
- Practice more climate-resilient agriculture practices

Not just in palm but also able to take up other entrepreneurial activities

- Increased household income
- Better resilience

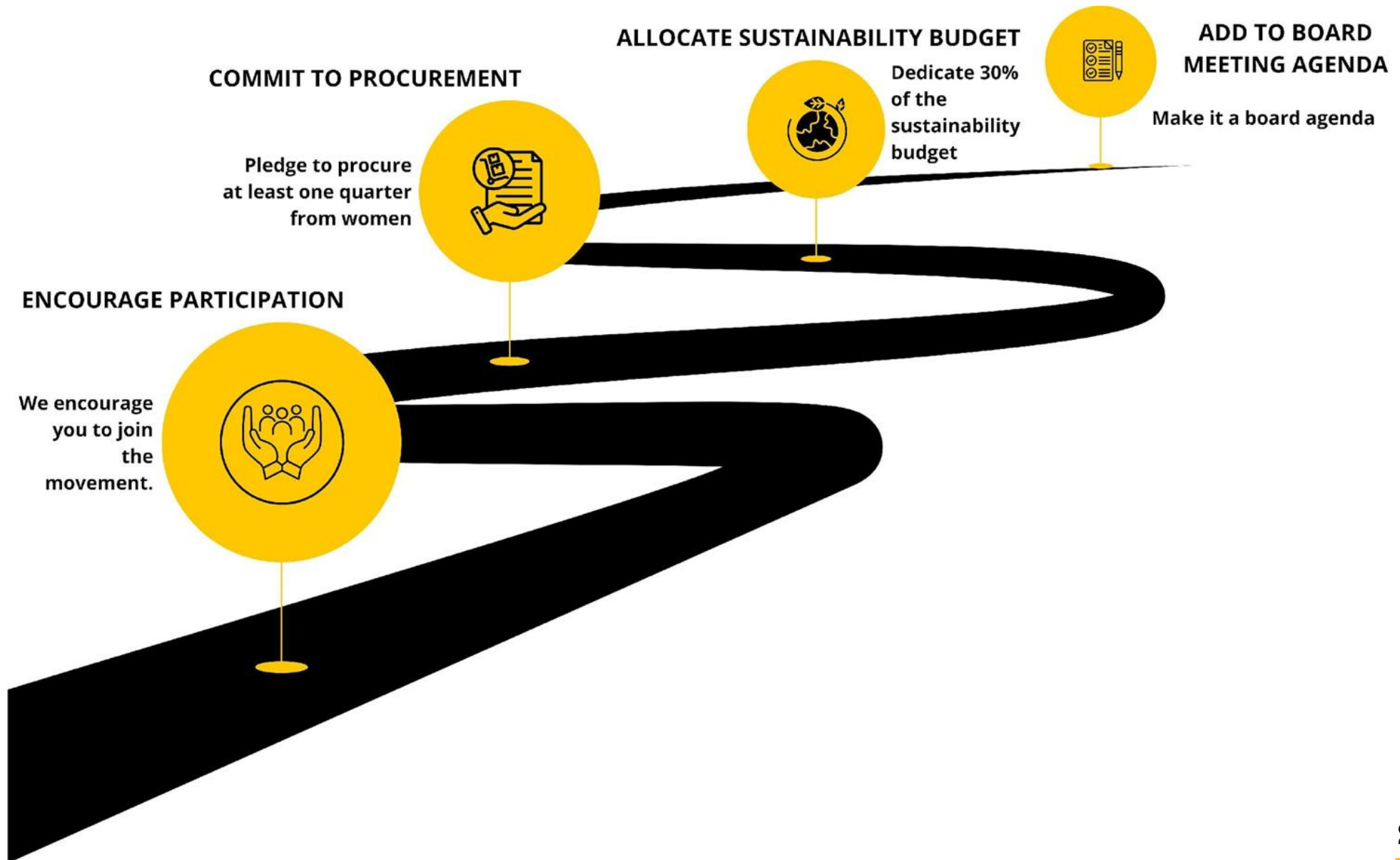
Financial literacy trainings have led to better financial management

- Women are part of the decision-making process on the investment of money earned
- Improved negotiation skills

EMPOWERED COMMUNITY



CALL TO ACTION



THANK YOU



We would be pleased to engage further....

You can reach out to us

Neha

email: neha@solidaridadnetwork.org

Vivi Widyawati

email: widyawati.vivi@gmail.com



Federal Ministry
for Economic Cooperation
and Development

Implemented by

giz Deutsche Gesellschaft
für Internationale
Zusammenarbeit (GIZ) GmbH

Thank you for joining !

See you at our next SASI-Lunchbreak next year

On Friday, Feb 6th we will speak about sustainability in
natural rubber supply chains.